



Features

- Single phase high current filter
- Low-frequency high attenuation characteristics due to the use of super high μ material
- Leak current lower than 0.6mA (250Vac, 60Hz).

Applications

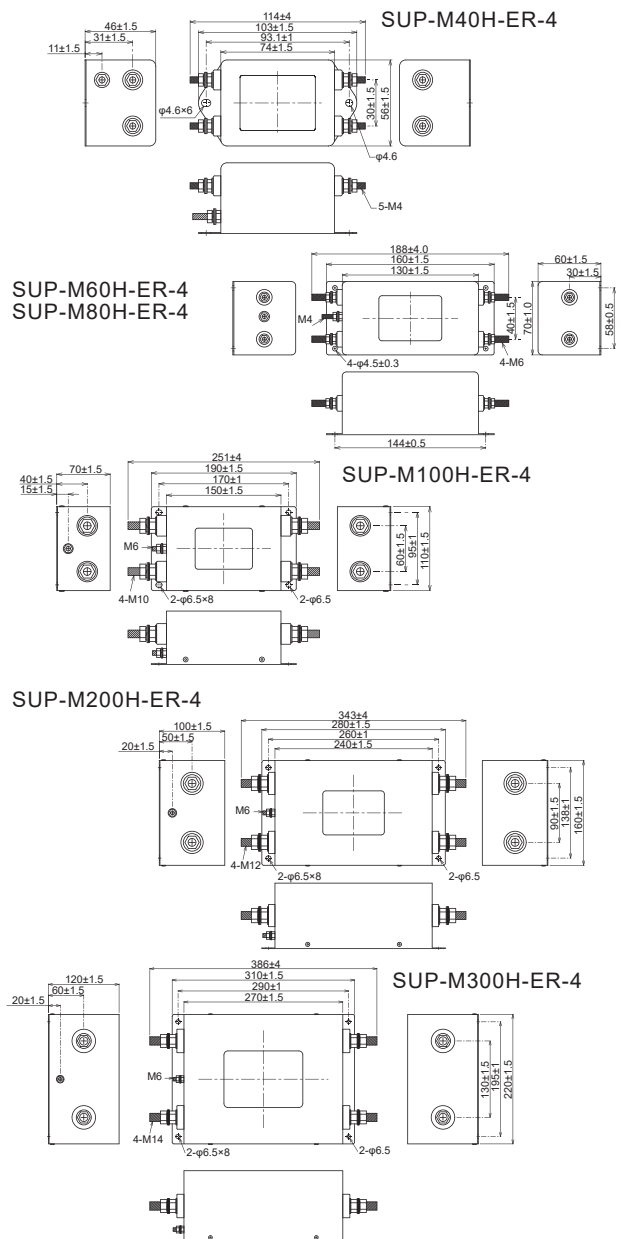
- PCs, Printers, UPS, Office appliances, Measuring devices, and Control systems.



Safety Standard	File No.
UL : UL-1283	E78644

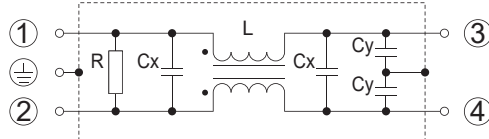
*File No. may be revised without notice. Please contact us at the time of your request for certifications.

• **Dimensions**

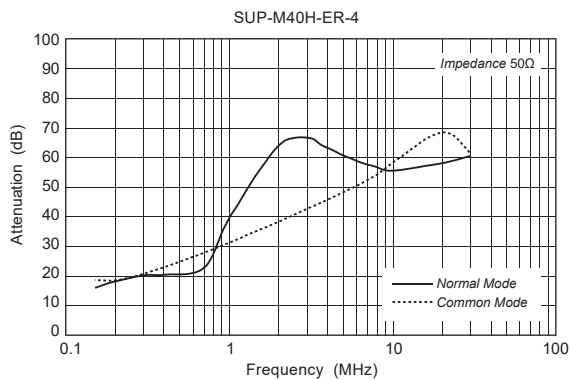


Unit: mm

• **Circuit**



• **Static characteristics (Representative example)**



Electrical Specifications

Rated Voltage **250Vac**

Safety Agency	Model Number	Rated Current (A)	Test Voltage	Insulation Resistance	Leakage Current max.	Voltage Drop max.	Temperature Rise max.	Operating Temperature (°C)	Insertion losses		Weight typ.(kg)
									Normal Mode (MHz)	Common Mode (MHz)	
RU	SUP-M40H-ER-4	40	Line to Line 1,000Vac 50/60Hz 60sec Line to Ground 2,000Vac 50/60Hz 60sec	Line to Ground 6,000M Ω min (at 500Vdc)	0.6mA (at 250Vac 60Hz)	Less than 1.0Vac	35K	-25 ~ +50	*1 1.0 ~ 30	*4 2.0 ~ 30	0.4
	SUP-M60H-ER-4	60							*2 0.6 ~ 30	*5 2.0 ~ 30	0.9
-	SUP-M80H-ER-4	80	Line to Ground 6,000M Ω min (at 500Vdc)	0.6mA (at 250Vac 60Hz)	Less than 1.0Vac	35K	-25 ~ +50	*2 0.6 ~ 30	*5 2.0 ~ 30	1.0	
	SUP-M100H-ER-4	100						*3 0.4 ~ 30	*5 2.0 ~ 30	2.0	
	SUP-M200H-ER-4	200						*3 0.4 ~ 30	*5 2.0 ~ 30	7.2	
	SUP-M300H-ER-4	300						*3 0.4 ~ 30	*5 2.0 ~ 30	12.0	

Guaranteed attenuation of *1 is 30dB, *2 is 35dB, *3 is 40dB, *4 is 25dB and *5 is more than 20dB.