

Features

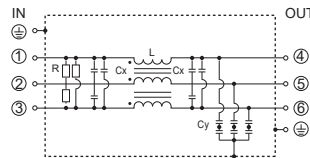
- Three-phase filter delta (250Vac)
- 30% smaller size of former model
- The capacitance of X and Y capacitor is selectable.

Applications

- Inverter power supplies, UPS, NC controlled machineries



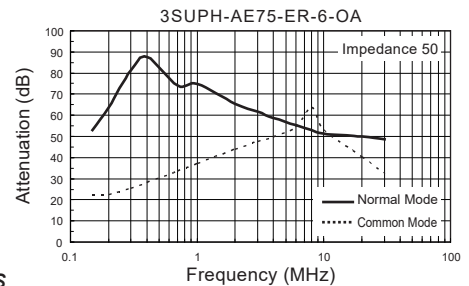
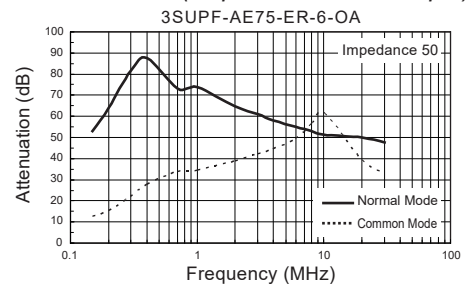
Circuit



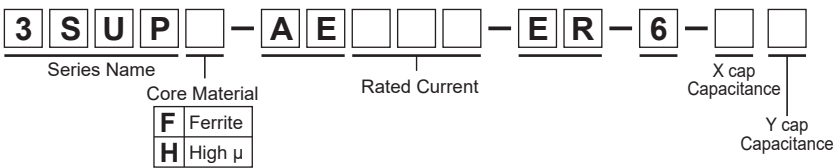
Safety Standard	File No.
UL :UL-1283	E78644
cUL :CSA C22.2 No.8	
SEMKO :EN60939-3	SE-ENEC-2201390

The "ENEC" mark is a common European product certification mark based on testing to harmonised European safety standard.
*File No. may be revised without notice. Please contact us at the time of your request for certifications.

Static characteristics (Representative example)

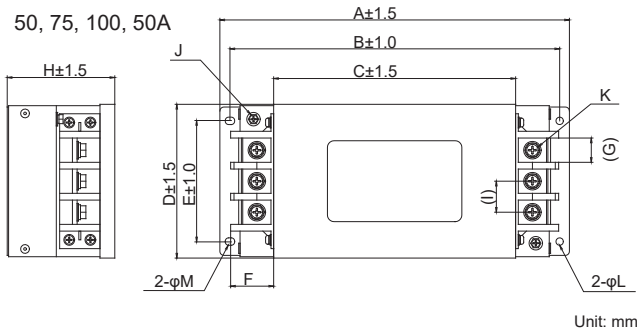


Model numbering system



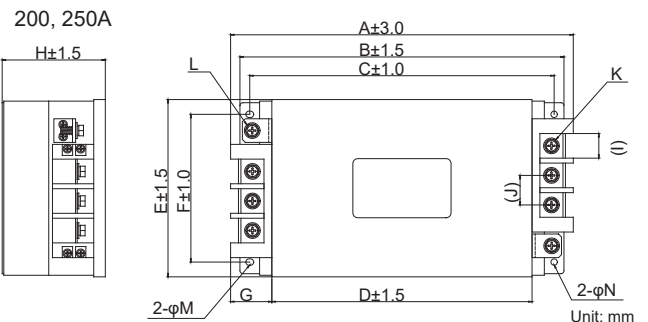
Dimensions

50, 75, 100, 50A



Model Number	Dimensions (mm)												
	A	B	C	D	E	F	G	H	I	J	K	L	M
3SUP□-AE50	185	170	120	110	85	23	13	80	18	M4	M6	5.5	5.5x7
3SUP□-AE75	260	245	182	116	90	33	18	80	23	M4	M6	5.5	5.5x7
3SUP□-AE100	260	245	182	116	90	33	18	80	23	M4	M6	5.5	5.5x7
3SUP□-AE150	310	290	220	163	133	42	25	100	30	M6	M8	6.5	6.5x8

Dimensions



Model Number	Dimensions (mm)													
	A	B	C	D	E	F	G	H	I	J	K	L	M	N
3SUP□-AE200	349	330	310	265	180	150	42	105	25	30	30	M8	6.5x8	6.5
3SUP□-AE250	364	345	325	280	180	150	42	120	25	30	30	M8	6.5x8	6.5

Electrical Specifications

Rated Voltage **250Vac**

Safety Standard	Model Number *1	Rated Current (A)	Test Voltage	Insulation Resistance	Leakage Current max. *2	Voltage Drop max.	Temperature Rise max.	Operating Temperature (°C)	Weight typ.(kg)
	3SUP□-AE50-ER-6-OA	50	Line-Case 2,000Vac 50/60Hz 60sec	Line-Case 6,000MΩmin (at 500Vdc)	1.1mA (at 250Vac 60Hz)	1.0Vac	50K	-25 ~ +50 (100°C with Temp. rise)	2.0
	3SUP□-AE75-ER-6-OA	75							3.2
	3SUP□-AE100-ER-6-OA	100							7.0
	3SUP□-AE150-ER-6-OA	150							8.5
	3SUP□-AE200-ER-6-OA	200							10.0
3SUP□-AE250-ER-6-OA	250								

*1 Standard type

*2 Leakage current of Standard type