

**Features**

- Uses wiring-easy terminal block.
- The super high  $\mu$  core allows high attenuation.
- Wide range lineup (5 to 30A)
- Bleeder resistor for electric shock protection.

**Applications**

- Information processing devices, Office appliances, Various control systems and etc.

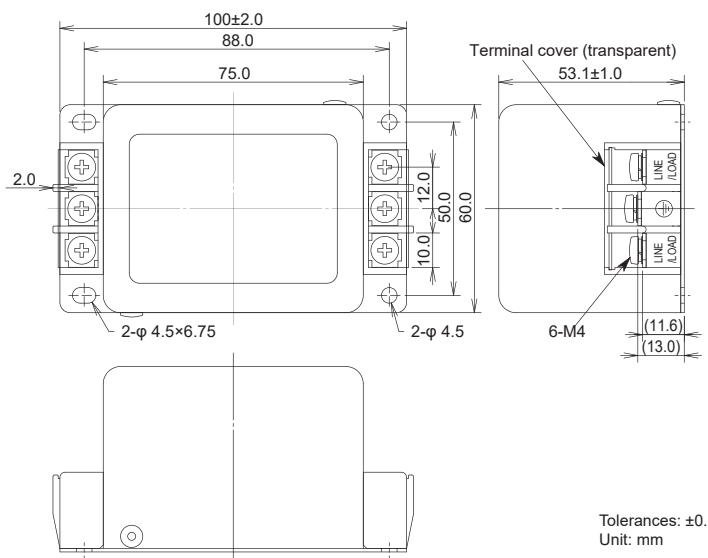


Safety Standard		File No.
UL	:UL-1283	E78644
cUL	:CSA C22.2 No.8	E78644
TÜV	:EN60939-3	R50006839

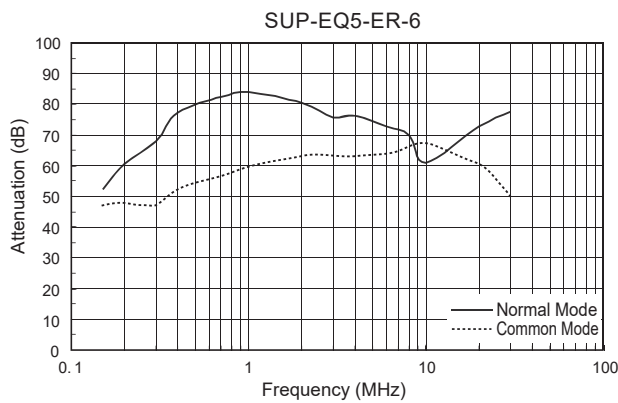
\*File No. may be revised without notice. Please contact us at the time of your request for certifications.



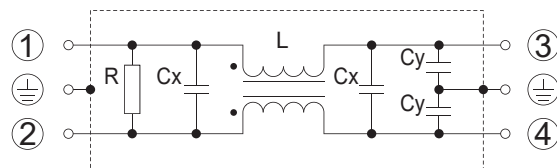
• **Dimensions (5~30A)**



• **Static characteristics (Representative example)**



• **Circuit (5~30A)**



**Electrical Specifications**

Rated Voltage **250Vac**

Safety Standard	Model Number	Rated Current (A)	Test Voltage	Insulation Resistance	Leakage Current max.	Voltage Drop max.	Temperature Rise max.	Operating Temperature (°C)	Insertion losses		Weight typ.(g)
									Normal Mode (MHz)	Common Mode (MHz)	
	SUP-EQ5-ER-6	5	Line to Case 2,500Vac 50/60Hz 60sec	Line to Case 100M $\Omega$ min (at 500Vdc)	1mA (at 250Vac 60Hz)	1.0Vac	45K	-25 ~ +55 (100°C with Temp. rise)	0.15 ~ 30	0.15 ~ 20	450
	SUP-EQ10-ER-6	10							0.2 ~ 30	0.6 ~ 20	
	SUP-EQ15-ER-6	15							0.4 ~ 30	1.0 ~ 30	
	SUP-EQ20-ER-6	20								3.0 ~ 30	
	SUP-EQ30-ER-6	30									

Guaranteed attenuation is more than 30dB in normal mode and common mode.  
Available leakage current 70 $\mu$ A max.(250Vac, 60Hz) type for medical equipments and low leakage current equipments.