



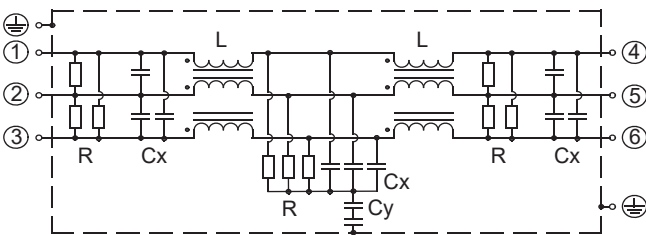
Features

- Low profile
- Three-phase filter delta (250Vac)
- The capacitance of Y cap is selectable

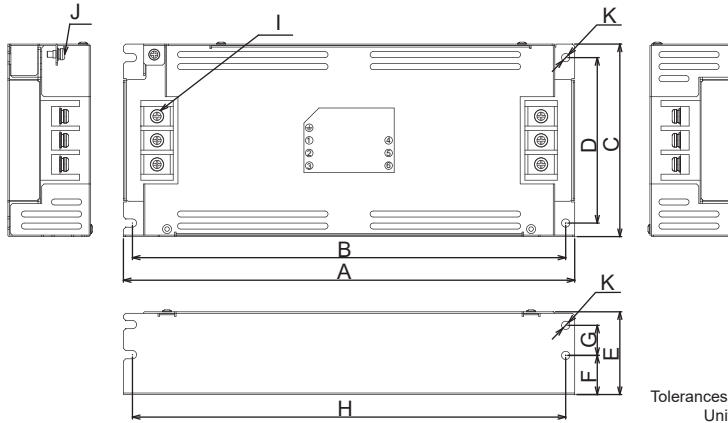
Applications

- Inverter power supplies, UPS, NC controlled machineries

Circuit



Dimensions

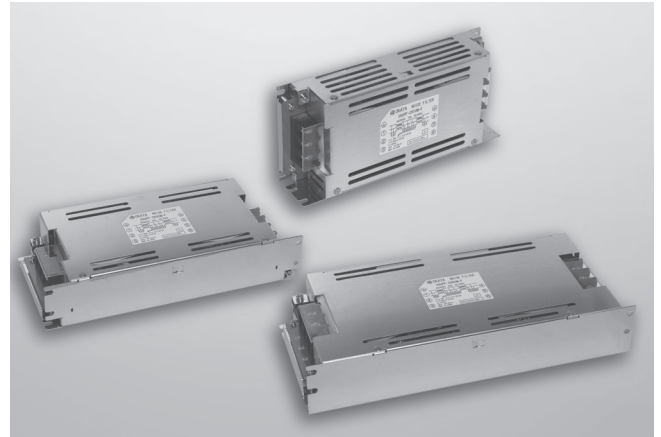


Model Number	Dimensions (mm)										
	A	B	C	D	E	F	G	H	I	J	K
3SUP□-CE6M-F	210	200	95	83	45	19	18	200	M4	M4	φ4.5
3SUP□-CE10M-F											
3SUP□-CE20M-F											
3SUP□-CE30M-F	240	230	105	90	50	19	23	230	M4	M4	φ4.5
3SUP□-CE40M-F											
3SUP□-CE50M-F	300	288	128	110	55	26	20	288	M5	M4	φ5.5
3SUP□-CE60M-F											

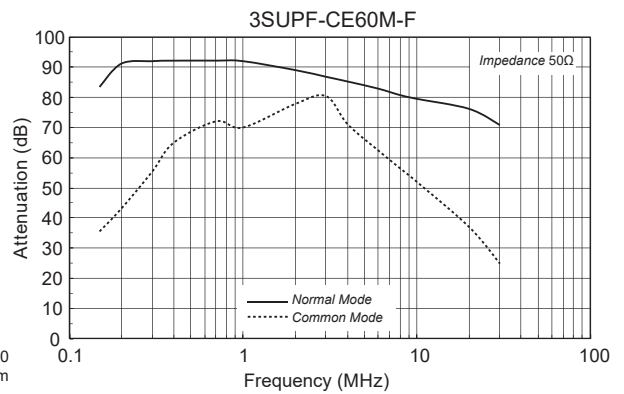


Safety Standard	File No.
UL :UL-1283	E78644
ENEC :EN60939-3	SE-ENEC-2201018R1

The "ENEC" mark is a common European product certification mark based on testing to harmonised European safety standard.
*File No. may be revised without notice. Please contact us at the time of your request for certifications.



Static characteristics (Representative example)



Electrical Specifications

Rated Voltage **250Vac**

Safety Standard	Model Number*1	Rated Current (A)	Test Voltage *2	Insulation Resistance	Leakage Current *3 max.	Voltage Drop max.	Temperature Rise max.	Operating Temperature (°C)	Weight typ.(kg)
	3SUP□-CE6M-F	6	Line to Case 2,000Vac 50/60Hz 60sec	Line to case 100MΩmin (at 500Vdc)	2.8mA (at 250Vac 60Hz)	1.0Vac	55K	-25 ~ +50 (Derating of current from 50 to 85°C)	0.8
	3SUP□-CE10M-F	10							0.8
	3SUP□-CE20M-F	20							1.1
	3SUP□-CE30M-F	30							1.1
	3SUP□-CE40M-F	40							2.1
	3SUP□-CE50M-F	50							2.1
	3SUP□-CE60M-F	60							2.1

□= F: Ferrite, H: High-μ

*1 Standard type *2 Leakage current of Standard type *3 Leakage current of standard type