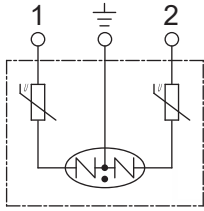




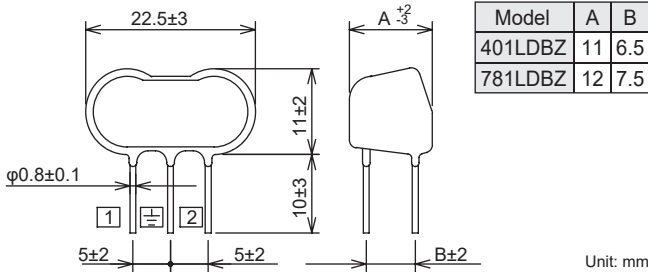
R·A·V-LDEZ

Designed specifically for use in AC power line applications. This model uses specially treated discharge electrodes for greatly enhanced noise immunity test and surge life making it optimum for the protection of single-phase power supply circuits.

● **Circuit**



● **Dimensions**

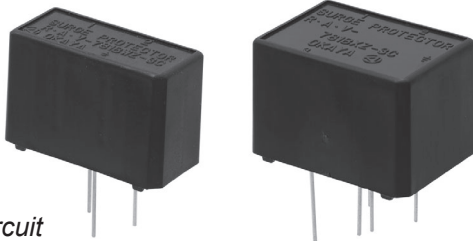


R·A·V-BWZ-3C, BXZ-3C

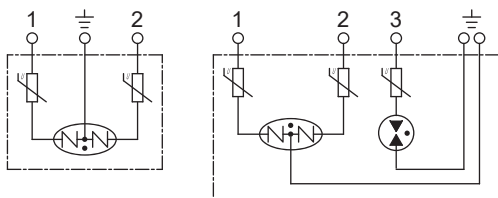
Use of surge protectors: Inverter, NC control systems, Welding machines and etc.

BWZ-3C series

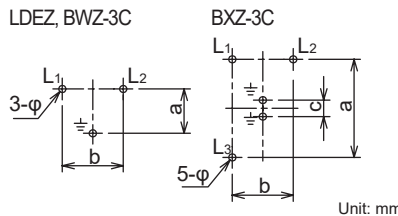
BXZ-3C series



● **Circuit**



● **Print circuit board hole dimensions**



Note: For BXZ-3C type, since ± terminals are independent, short-circuit ± terminals on the board.

Model Number	Dimensions (mm)			
	a	b	c	φ
401LDEZ	6.5	10	-	1.2*
781LDEZ	7.5			
401BWZ-3C	6	2.8	-	-
78BWZ-3C	6.9			
781BXZ-3C	16.6			

* Reference Value

Electrical Specifications

Safety Standard	Model Number	Line Voltage 50/60Hz		Max. Line Voltage (V)	Clamping Voltage (V) ±10%	Impulse Discharge Current 8/20μs (A)	Withstanding Impulse Voltage 1.2/50μs (V)	Capacitance (pF)*	Weight (g)*
		Phase	Voltage						
UL	R·A·V-401LDEZ	Single Phase	AC125V	145	403	1,000	12,000	100	5
	R·A·V-781LDEZ	Single Phase	AC250V	300	783			50	6
	R·A·V-401BWZ-3C	Single Phase	AC125V	145	403	2,500	20,000	100	17
	R·A·V-781BWZ-3C	Single Phase	AC250V	300	783			50	18
	R·A·V-781BXZ-3C	Three Phase	AC250V					27	

* Reference Value

Operating Temperature: -20~+70°C

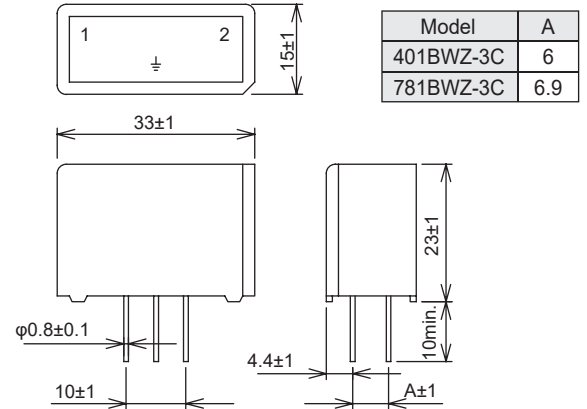


Safety Standard		File No.
UL	:UL1449	E322107
cUL	:C22.2 No.269.5	

* File No. may be revised without notice. Please contact us at the time of your request for certifications.

● **Dimensions**

BWZ-3C series



BXZ-3C series

