

**Features**

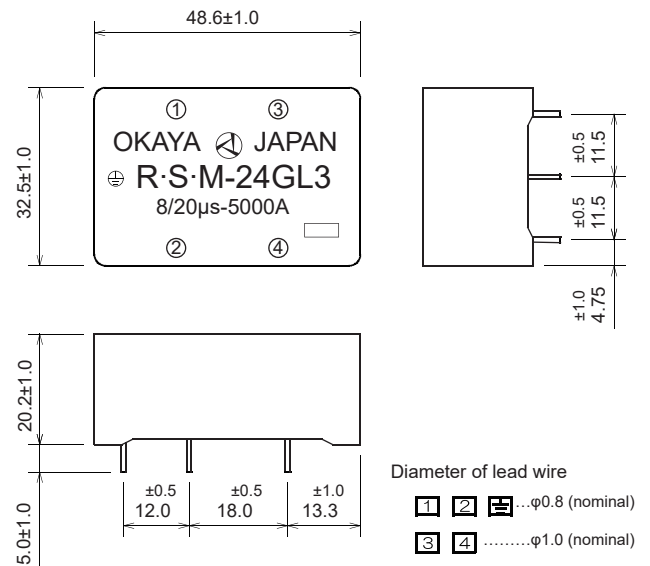
- SPD for data signal line and control line
- Compliance to JIS C 5381-2 and category C2/D1
- Impulse withstand current C2: 8/20μs-5kA  
D1: 10/350μs-2.5kA
- Longer impulse current life and higher impulse withstand current than old R·S·M-RL

**Applications**

- Data processing machine and control machine with communication signal line
- LED light dimmer
- Fire alarm apparatus system
- Security camera
- Outdoor display unit

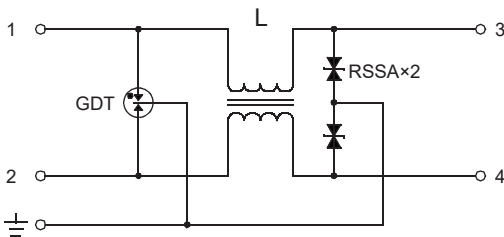


• *Dimensions*



Unit: mm

• *Circuit*



**Electrical Specifications**

Model Number		R·S·M-5GL3	R·S·M-12GL3	R·S·M-24GL3	R·S·M-48GL3	
Rated Voltage	1,2- ⚡	-	DC5.0V	DC12.0V	DC24.0V	DC48.0V
Max. Continuous Operating Voltage	1,2- ⚡	-	DC6.63V	DC14.5V	DC26.8V	DC55.1V
Rated Current	1-3-4-2	-	3A			
Residual Voltage (Representative Value) 1.2/50μs-8/20μs, 10kV-5kA	3,4- ⚡	-	30V	60V	70V	100V
Impulse Discharge Current	1,2- ⚡	Category C2	8/20μs-5kA, 5 times for each positive and negative			
		Category D1	10/350μs-2.5kA, 1 time for each positive and negative			
Impulse Life Test	1,2- ⚡	Category C3(B1/B3)	10/1,000μs-100A, 300times			
		Category B2	5/300μs(10/700μs)-100A, 300times			
		Category C1	8/20μs-500A, 300times			

Operating Temperature: -20~+60°C