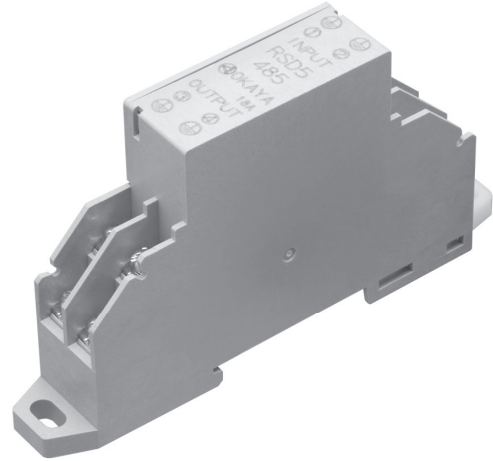


Features

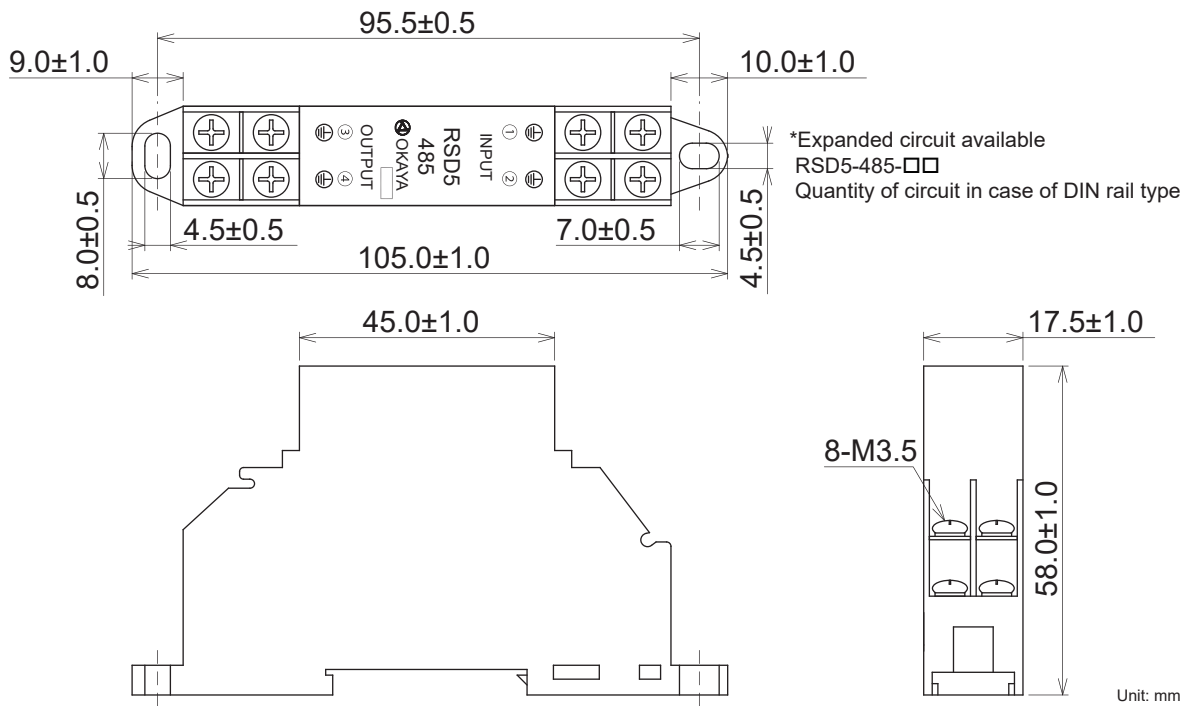
- SPD for RS-485 and RS422 signal circuit
- Compliance to JIS C 5381-2 and category C2/D1
- Impulse current capacity C2: 8/20µs-5kA
D1: 10/350µs-2.5kA
- Available to DIN rail
- Longer impulse current life and higher impulse withstand current than old RSP-485M

Applications

- Data processing machine and control machine with RS-485 line or RS-422 line
- Fire alarm apparatus system
- Security camera
- Coin-operated parking
- Outdoor display unit



Dimensions



Electrical Specifications

Nominal breakdown voltage VBR ① ②-⊥, ③ ④-⊥	8.2V(at 10mA)	
Breakdown tolerance	±10%	
Max. operating voltage VWM (①-②,③-④)	DC13.26V	
Max. circuit current (①-②,③-④)	3A	
Leakage of current I _R ① ②-⊥, ③ ④-⊥	2mA max.(at 6.63V)	
Impulse current capacity ① ②-⊥, ③ ④-⊥	Category C2	8/20µs-5kA, 5 times for each positive and negative
	Category D1	10/350µs-2.5kA, 1 time for each positive and negative
Impulse life test ① ②-⊥, ③ ④-⊥	Category C3(B1/B3)	10/1000µs-100A, 300 times
	Category B2	5/300µs(10/700µs)-100A, 300 times
	Category C1	8/20µs-500A, 300 times

Operating Temperature: -40~+85°C

Circuit

