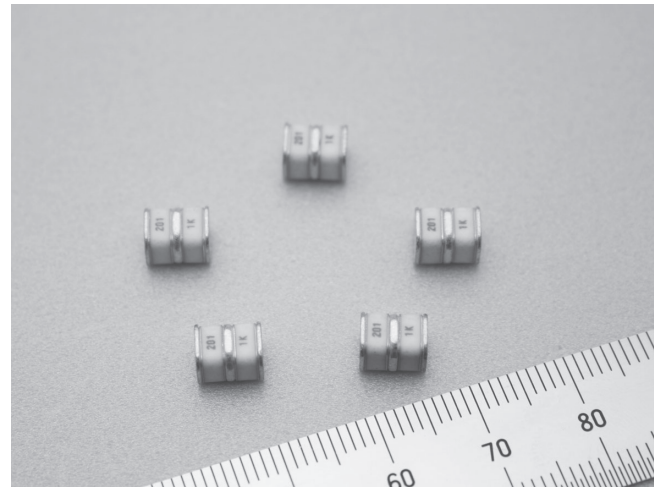
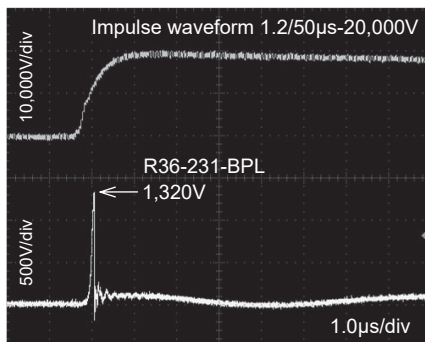
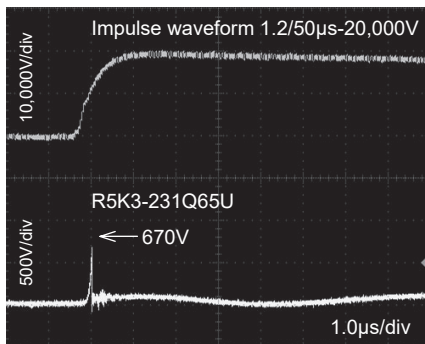


Features

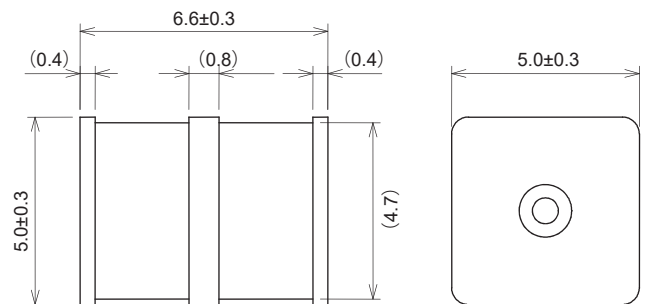
- Small surface mount type corresponding to reflow solder
- High impulse current capacity 8/20 μ s-5,000A
- Quick response for surge
- Excellent insulation resistance and small capacitance (1.0pF max.)
- Recommendation of ITU-T conformity

Applications

- Homegateway equipments
 - Telephone, PBX, wireless base station
 - Optical transmission equipments
 - CATV transmission equipments, BS / CS broadcasts equipments
 - Fire alarm systems and home security systems
- *Impulse Absorption Characteristics*

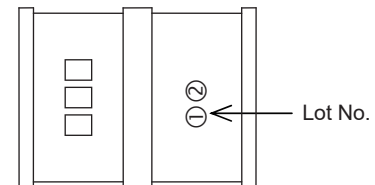


Dimensions



Unit: mm

Description of marking



□□□..... DC Breakdown Voltage
eg.) R5K3-231P65U→231

[Lot No.] Ⓢ..... Identification of manufacture year
eg.) 2019→9

Ⓢ..... Manufacture month (see below)

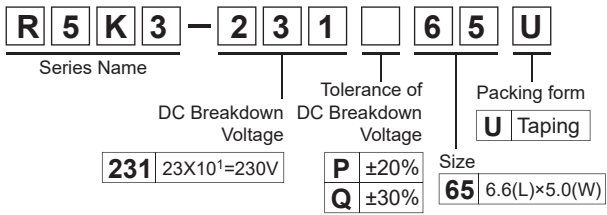
Month	1	2	3	4	5	6	7	8	9	10	11	12
Symbol	A	B	D	E	F	G	H	J	K	L	M	N

Electrical Specifications

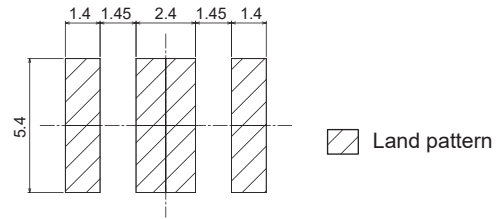
Model Number*1	DC Breakdown Voltage (V)	Insulation Resistance (M Ω) min.	Capacitance 1MHz (pF)max.	Impulse Life Test	Impulse Current Capacity*2	Impulse Withstanding Voltage Capacity*2
R5K3-750□65U	75	1,000(DC50V)	1.0	8/20 μ s, 100A 300 times	8/20 μ s, 5,000A (R= Ω) Positive/Negative 5 times	10/700 μ s 15,000V (R=25 Ω) Positive/Negative 5times
R5K3-900□65U	90					
R5K3-231□65U	230	1,000(DC100V)	1.0	8/20 μ s, 100A 300 times	8/20 μ s, 5,000A (R= Ω) Positive/Negative 5 times	10/700 μ s 15,000V (R=25 Ω) Positive/Negative 5times
R5K3-251□65U	250					
R5K3-351□65U	350					
R5K3-421□65U	420					
R5K3-501□65U	500					
R5K3-601□65U	600					

*1 □: Tolerance \pm 20%=P, Tolerance \pm 30%=Q *2 Comforms to ITU-T K.20,K.21 Enhanced test
Operating Temperature: -20~+80°C

• Model numbering system



• Recommended Land Pattern (Typical value)

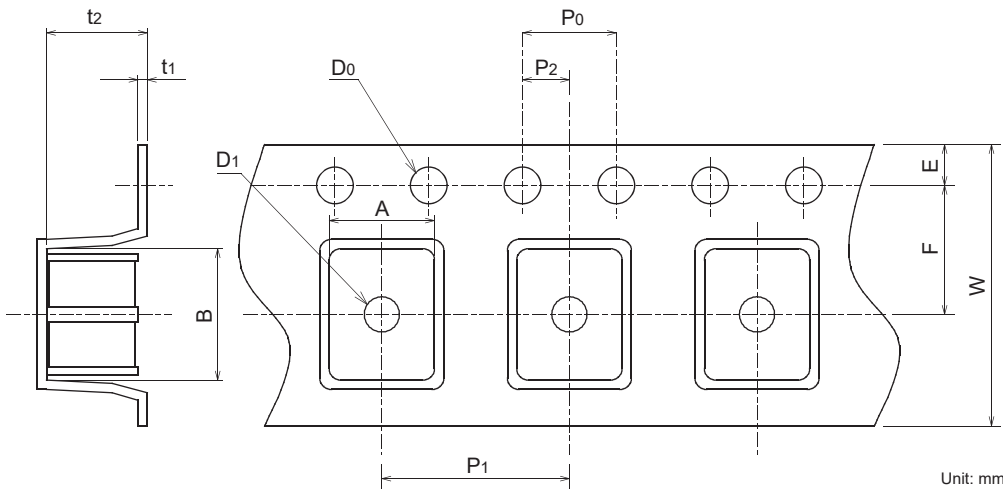


Recommended thickness of copper foil is 70µm for upgrading of withstand surge current.

Unit: mm

	Dimensions (mm)				
	a	b	c	d	e
Reflow Soldering	1.8	1.8	5.3	8.1	5.4

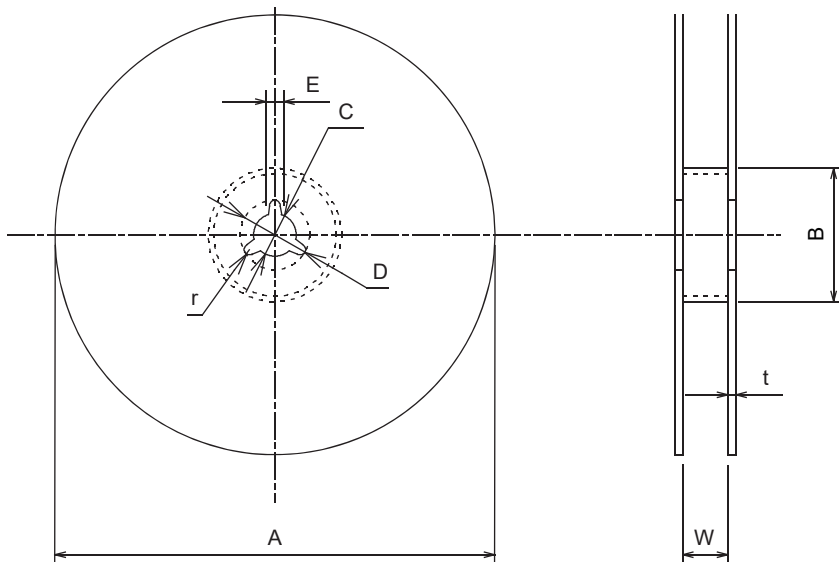
• Taping Dimensions



Unit: mm

Dimensions (mm)	
A	5.6±0.3
B	7.3±0.3
W	16.0±0.4
F	7.5±0.2
E	1.75±0.2
P1	8.0±0.2
P2	2.0±0.2
P0	4.0±0.2
D0	φ 1.55±0.1
D1	φ 1.5 min.
t1	0.40±0.2
t2	5.35±0.2

• Reel Dimensions (2,000pcs per one reel)



Unit: mm

Dimensions (mm)	
A	φ 380±3
B	φ 80±2
C	φ 13.0±0.5
D	φ 21±1
E	2±1
W	17.5±2.0
t	2.0±0.5
r	1.0±0.2