



# SUP-PH-E1PR / -R SERIES

## NOISE FILTERS



### Features

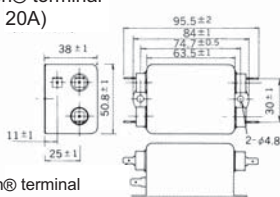
- Low range high attenuation effects by super high  $\mu$  material (20~30dB at 10,000Hz). Excellent pulse absorption (more than 25dB attenuation with 1,500V pulse).
- Two types of leakage current
  - less than 70 $\mu$ A
  - less than 10 $\mu$ A (applies to medical equipment)
- Three terminal styles (Faston®, solder and screw).
- Bleeder resistor for electric shock protection.

### Applications

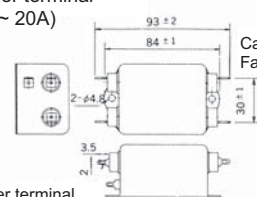
- Information processing devices (for Europe), Medical equipments, Office appliances and Various control systems.

### Dimensions

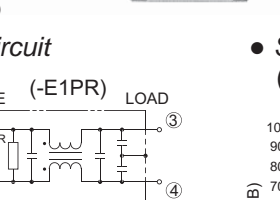
Faston® terminal  
(5A ~ 20A)



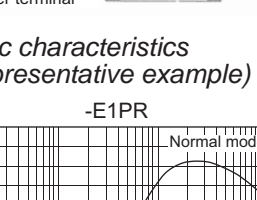
Solder terminal  
(5A ~ 20A)



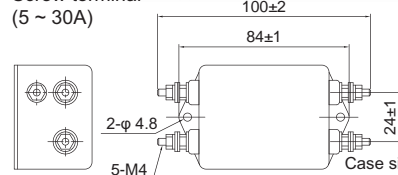
Faston® terminal  
(#250)



Solder terminal



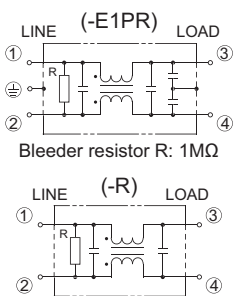
Screw terminal  
(5 ~ 30A)



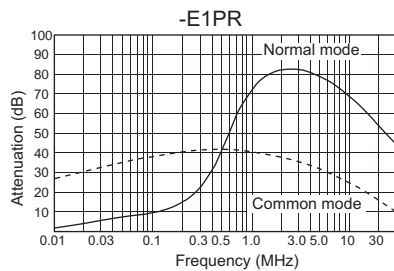
Case size is the same as Faston® terminal type

Case size is the same as Faston® terminal type

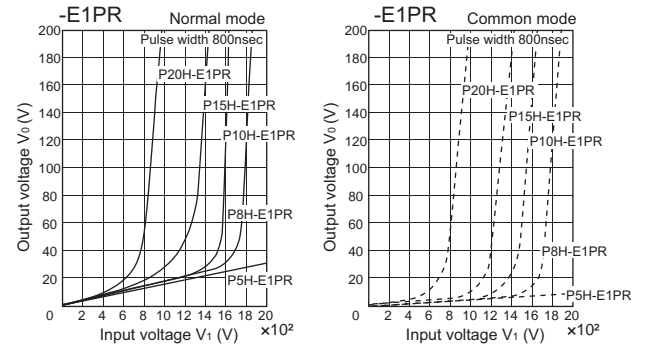
### Circuit



### Static characteristics (Representative example)



### TVSS characteristics



Unit: mm

### Electrical Specifications

Rated Voltage **250Vac**

Safety Standard	Model Number	Rated Current (A)	Test Voltage	Insulation Resistance	Leakage Current max.	Voltage Drop max.	Temperature Rise max.	Operating Temperature (°C)	Insertion losses		Weight typ.(g)
									Normal Mode (MHz)	Common Mode (MHz)	
RU	SUP-P5H-E1PR(5/3)	5	Line to Line 1,000Vac 50/60Hz 60sec	Line to Case 6,000M $\Omega$ min (at 500Vdc)	70 $\mu$ A (at 250Vac 60Hz)	1.0Vac	35K	-25~ +50 (85°C with Temp. rise)	0.5 ~ 20	0.05 ~ 20	275
	SUP-P8H-E1PR(8/3)	8							0.6 ~ 30	0.09 ~ 30	
	SUP-P10H-E1PR(10/3)	10							0.7 ~ 30	0.1 ~ 30	
	SUP-P15H-E1PR(15/3)	15							1.5 ~ 30	3.0 ~ 30	
SF	SUP-P20H-E1PR(20/3)	20							3.0 ~ 30	4.0 ~ 30	
	*SUP-P30H-E1PR-4	30							0.5 ~ 20	-	
	SUP-P5H-R(5/3)	5							0.6 ~ 30	-	
	SUP-P8H-R(8/3)	8							0.7 ~ 30	-	
S	SUP-P10H-R(10/3)	10							1.0 ~ 30	-	
	SUP-P15H-R(15/3)	15							1.5 ~ 30	-	
	SUP-P20H-R(20/3)	20	3.0 ~ 30	-							
14	*SUP-P30H-R-4	30	-	-							

Guaranteed attenuation is more than 40dB in normal mode and more than 35dB in common mode for SUP-PH-E1PR series.  
(more than 25dB at 15A and more than 20dB at 20A, 30A)  
\*only screw terminal type